

SPONSOR PACKET

twenty-fifth annual

U M L A U F  
*Garden Party*



**04.18.24**

RSVP AT [UMLAUFSCULPTURE.ORG](http://UMLAUFSCULPTURE.ORG)





## Message from the Garden Party Chairs:

Dear Friends,

Jonathon and I are ecstatic and honored to be returning as co-chairs for the 25th annual Garden Party benefitting UMLAUF Sculpture Garden + Museum. This is a very special year, not only because it marks a milestone as the 25th Garden Party, but also because we are entering into an extremely exciting phase of property development and expansion as we aim to incorporate the UMLAUF house and studio with the museum grounds. It is crucial to have enormous support to realize this campaign, while simultaneously continuing to provide the numerous outreach programs and preservation of the renowned works and vision of UT professor and esteemed artist, Charles Umlauf.

Please join us in supporting this historic, prolific artist and his iconic Austin landmark to create a space for future generations to learn, explore and enjoy.

*With gratitude,*

Dale Huggins & Jonathon Todd



## Why sponsor the Garden Party?

By becoming a sponsor of the Garden Party, you will have the opportunity to:

- Highlight your support and community leadership to more than 600 attendees of the Garden Party.
- Recognized on all media and outreach. In 2023 we had over 524 million media impressions and over 154 thousand social media impressions!
- Support local arts and the more than 25 participating restaurants and culinary artists featured at the event.
- Network and increase your visibility with community leaders, philanthropists, and artists that support Austin landmarks and the creative arts community.

Proceeds from the fundraising event benefit:

- The UMLAUF's community programs, including free monthly Family Days, bi-monthly UMLAUF After Dark series, Museum Days and wellness programs.
- Artist exhibits and Insights where the public can meet the artist and learn about the inspiration behind their work.
- Youth programming including Camp UMLAUF, Shaping Space serving children in Title I schools throughout Austin, our annual free Fall Festival, StrawFest, where more than 1000 guests participate in fun activities with their families, and field trips to learn more about sculpture, art, nature, and the history of the UMLAUF family.
- Sustainability, preservation, and the future expansion of this local historic landmark, the UMLAUF Sculpture Garden + Museum.





# SPONSOR PACKAGES



## *Platinum Level*

**\$35,000**

- Sponsorship of a Tier 1 sculpture located at the UMLAUF Sculpture Garden + Museum with name on plaque
- Year-round sponsorship recognition at our bi-monthly UMLAUF After Dark events
- Recognized as a Garden Party Platinum Sponsor on all event materials, signage, event banner, event website, social media, and advertisements
- Logo on UMLAUF newsletters sent to 11,000 households
- One dedicated Instagram and Facebook recognition with logo
- Speaking opportunity during Garden Party VIP Reception
- Opportunity to customize sponsorship and choice of Premier Event Asset (pg. 10)
- 14 VIP and 10 general admission tickets to the Garden Party
- Six Torchbearer dual memberships

## *Signature Level*

**\$25,000**

- Sponsorship of one Tier 2 sculpture located at the UMLAUF Sculpture Garden + Museum with name on plaque
- Year-round sponsorship recognition at our bi-monthly UMLAUF After Dark events
- Recognized as a Garden Party Signature Sponsor on all event materials, signage, event banner, event website, social media, and advertisements
- Logo on UMLAUF newsletters sent to 11,000 households
- Opportunity to customize sponsorship and choice of Premier Event Asset (pg. 10)
- 10 VIP and 8 general admissions tickets to the Garden Party
- Five Torchbearer dual memberships



# SPONSOR PACKAGES



## *Gold Level*

**\$15,000**

- Sponsorship of one Tier 3 sculpture located at the UMLAUF Sculpture Garden + Museum with name on plaque
- Year-round sponsorship recognition at four of our bi-monthly UMLAUF After Dark events
- Recognized as a Garden Party Gold Sponsor on all event materials, signage, event banner, event website, social media, and advertisements
- Choice of Premier Event Asset (pg. 10)
- 8 VIP and 4 general admission tickets to the Garden Party
- Four Torchbearer Dual Memberships

## *Silver Level*

**\$10,000**

- Sponsorship of one Tier 4 sculpture located at the UMLAUF Sculpture Garden + Museum with name on plaque
- Year-round sponsorship recognition at two of our bi-monthly UMLAUF After Dark events
- Recognized as a Garden Party Silver Sponsor on all event materials, signage, event banner, event website, social media, and advertisements
- Choice of Event Day Asset (pg. 10)
- 6 VIP and 4 general admission tickets to the Garden Party
- Three Torchbearer Dual Memberships



# SPONSOR PACKAGES



## *Bronze Level*

**\$5,000**

- Sponsorship of one Tier 5 sculptures located at the UMLAUF Sculpture Garden
- Recognized as a Garden Party Bronze Sponsor on all event materials, signage, event banner, event website, social media, and advertisements
- Choice of Event Day Asset (pg. 10)
- 4 VIP and 2 general admission tickets to the Garden Party
- Two Torchbearer Dual Memberships

## *Patron Level*

**\$2,500**

- Recognized as a Garden Party Patron Sponsor on all event materials, signage, event banner, event website, social media, and advertisements
- 2 VIP and 2 general admission tickets to the Garden Party
- One Torchbearer Dual Membership



# SPONSOR PACKAGES



## *Friends of Umlauf*

**\$1,000**

- Recognized as a Garden Party Friends of UMLAUF Patron Sponsor on all event materials, signage, event banner, event website, social media, and advertisements
- 2 VIP tickets to the Garden Party

## EVENT DAY ASSETS TO CHOOSE FROM:

- **PREMIER EVENT ASSETS:**
  - Culinary Arts Sponsor
  - VIP Reception
  - After Party
  - Live Auction
  - Mission Moment
- **EVENT ASSETS:**
  - Champagne Wall
  - Entertainment
  - Photo Booth
  - Silent Auction
  - Valet





# SCULPTURE TIERS

## TIER 1 | \$35,000

LEFT TO RIGHT: THE KISS, PIETA, SPIRIT OF FLIGHT, ST. MICHAEL AND LUCIFER



LEFT TO RIGHT: MUSE II, MADONNA AND CHILD, SUPPLICATION, LOVERS V



LEFT TO RIGHT: ICARUS, MOTHER AND CHILD, FATHER AND SON, WAR MOTHER



## TIER 2 | \$25,000

LEFT TO RIGHT: RECLINING NUDE, PROMETHEUS, THE TORCHBEARERS, POETESS



## TIER 3 | \$15,000

LEFT TO RIGHT: FAMILY, EAGLE, EVE, RECLINING NUDE, HOPE OF HUMANITY, BALLERINA, REFUGEES II, RECLINING FIGURE I, MUSE I, MUSE II, MUSE III, EVA CON MELA (EVE WITH APPLE), SEATED BATHER, ENTRANCE TO JERUSALEM, ANGEL'S WING



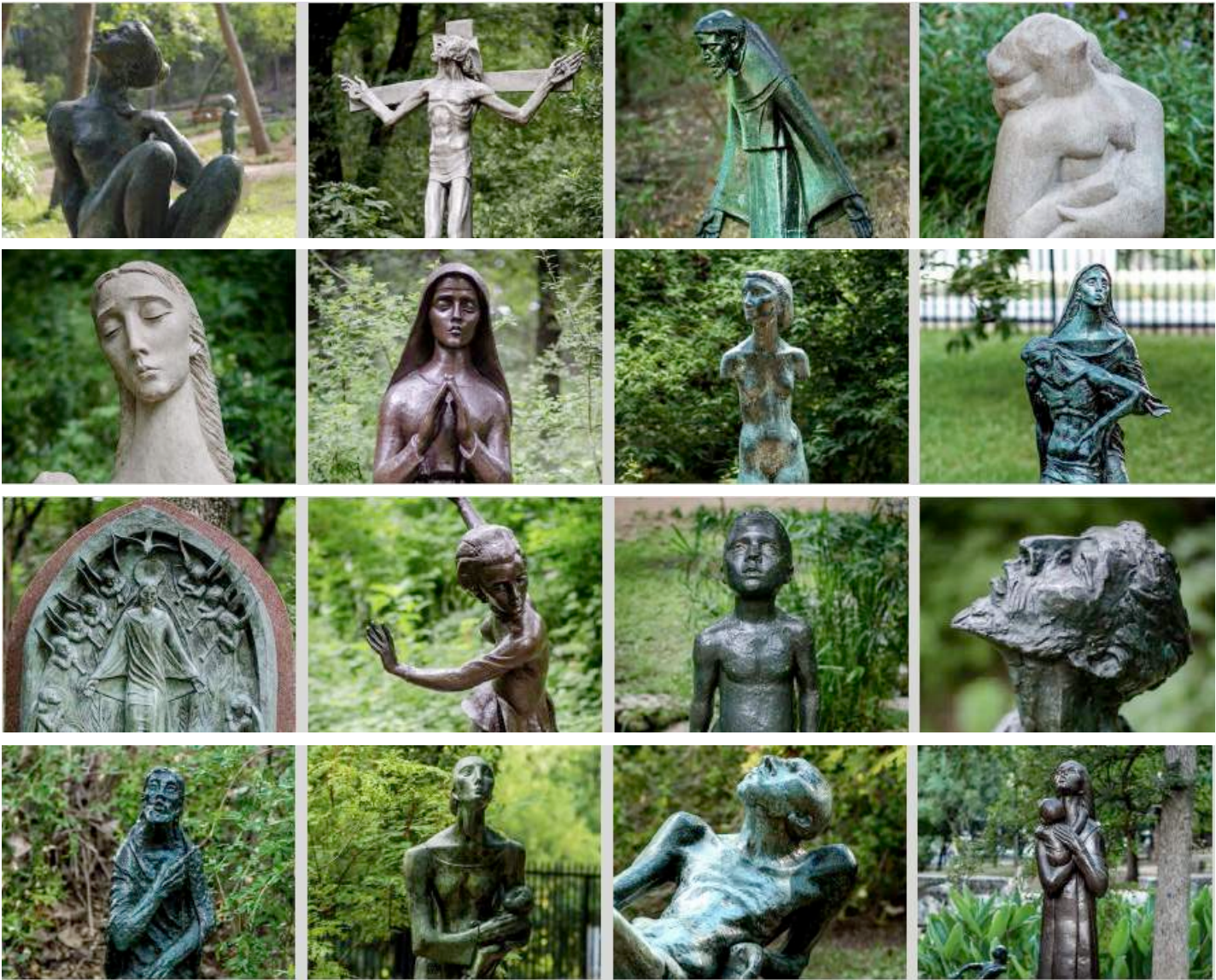


# SCULPTURE TIERS



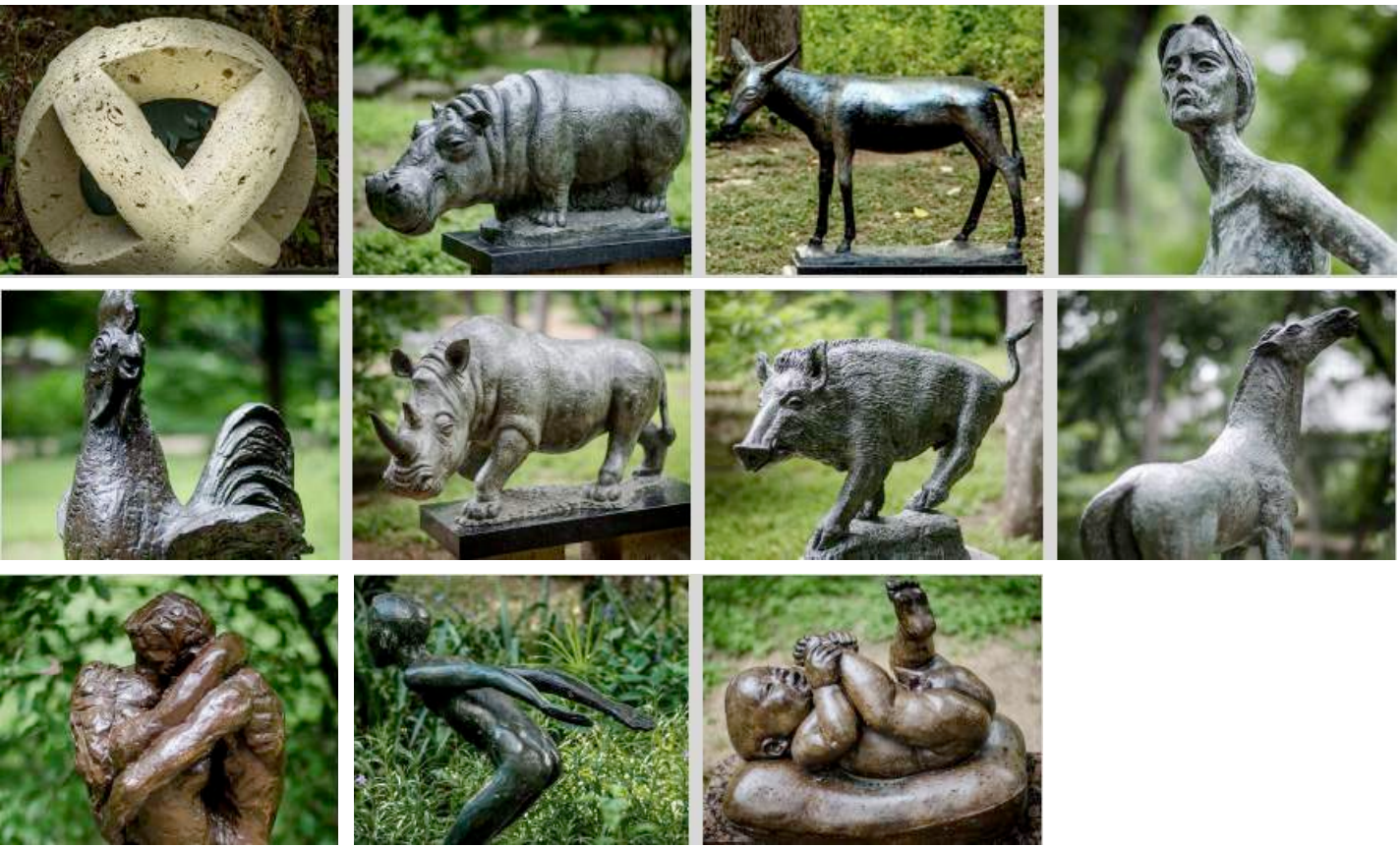
## TIER 4 | \$10,000

LEFT TO RIGHT: SEATED BATHER, CRUCIFIXION, ST. FRANCIS WITH BIRDS, WOMAN, MOTHER AND CHILD (BUST), NUN, YOUNG GIRL, PIETA, COME UNTO ME, SKATER, FIGURE OF BOY, JOHN THE BAPTIST I, JOHN THE BAPTIST II, MOTHER AND CHILD (REFUGEES), LAZARUS, MOTHER AND CHILD



## TIER 5 | \$5,000

LEFT TO RIGHT: POINTED SPHERE, LOTUS, BEAST OF BURDEN, STANDING FIGURE (DARLENE), ROOSTER, RHINO, WILD BOAR, YOUNG HORSE, AMANTI, UCCELLI (BIRDS OF ST. FRANCIS), DIVER, BAMBINO SU CUSCINO





SPONSOR PACKET

twenty-fifth annual

U M L A U F  
*Garden Party*

FOR QUESTIONS REGARDING GARDEN  
PARTY AND SPONSORSHIP,  
PLEASE CONTACT ERIKA GARZA HOLLAND AT:

[development@umlaufsculpture.org](mailto:development@umlaufsculpture.org)  
512.445.5582

The UMLAUF Sculpture Garden + Museum is a 501(c)3 nonprofit organization. Your sponsorship may be partially tax-deductible.



605 AZIE MORTON RD., AUSTIN, TX 78704  
RSVP AT: [UMLAUFSCULPTURE.ORG](http://UMLAUFSCULPTURE.ORG)

