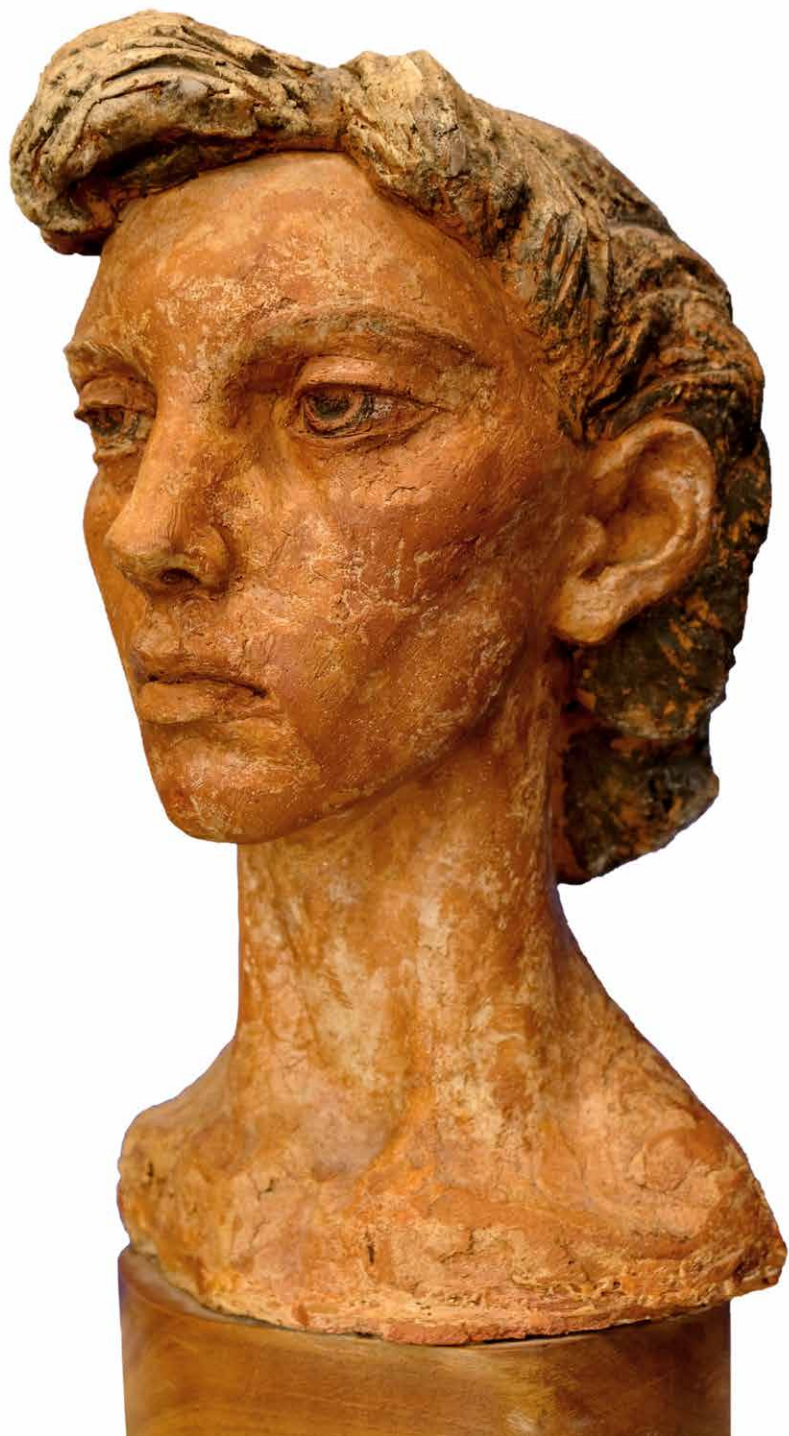


30x30x30

UMLAUF

1991-2021





Head of Martha, 1940s, painted terra cotta
Collection of Betsy Nelson, Christie Wise and Scott Wise

30x30x30



*Classic Figure, c.1959, terra cotta
Collection of Jonathon Todd
and Dale Huggins*

This very special exhibition marks the first major event in celebration of the UMLAUF Sculpture Garden + Museum's 30th Anniversary. The UMLAUF opened in 1991, thanks to a major gift of land and sculpture from Charles Umlauf (1910-1994) and his wife Angeline (1915-2012). Since then, we have welcomed more than a million visitors from all over the world who enjoy tranquility, art, nature, public, and private events on six wooded acres in the heart of Austin.

The 30x30x30 exhibition reveals countless surprises, a result of our curatorial team's goal of borrowing thirty objects by Charles Umlauf from thirty private collections. The number quickly flew past thirty, thanks to the incredible generosity of all the lenders and proud owners of Umlauf's works. Nearly everything in the exhibition is on temporary loan to the Museum, creating a unique opportunity to exhibit the wide range of Umlauf's styles, materials, and compositions during his six-decade career.





Man in Supplication, 1971
bronze
Collection of
Charles Peveto

Female Torso, 1987
bronze
Collection of
Kimberly Kohlhaas

The Kiss, c. 1975
bronze
Collection of
Patty and James Huffines

Madonna and Child, 1968
bronze
Collection of
Charles Peveto

Charles Umlauf spent his first thirty years in Michigan and Chicago, attending the Chicago Art Institute on scholarship, working in the ateliers of several renowned artists, and creating major public art sculptures. He met his future wife, Angeline, at the Art Institute. They moved to Austin in 1941 when he became a Professor of Life Drawing and Sculpture at the University of Texas. In Austin, the family grew to include six children, four of whom became artists themselves. Umlauf retired as Professor Emeritus from the University of Texas in 1981; soon after, he and Angeline made their gift of the family home, his studio, and 168 sculptures to the City of Austin. With the help of the Austin community, grants, and donors from all over the world, the UMLAUF has been open for public enjoyment since 1991.



The earliest works in the gallery date to the 1940s, when Umlauf explored poignant, expressionistic themes that were strongly influenced by the raging second World War. The stoneware *Pietá* (1950), with its emaciated, angular Christ figure, is a fine example. In the Garden, see *War Mother* (1939, cast stone), the large 1945 bronze *Pietá*, and *Refugees II* (1945, bronze), among others. At midcentury, the

Mother and Child, c. 1960, bronze
Collection of Anne Giles



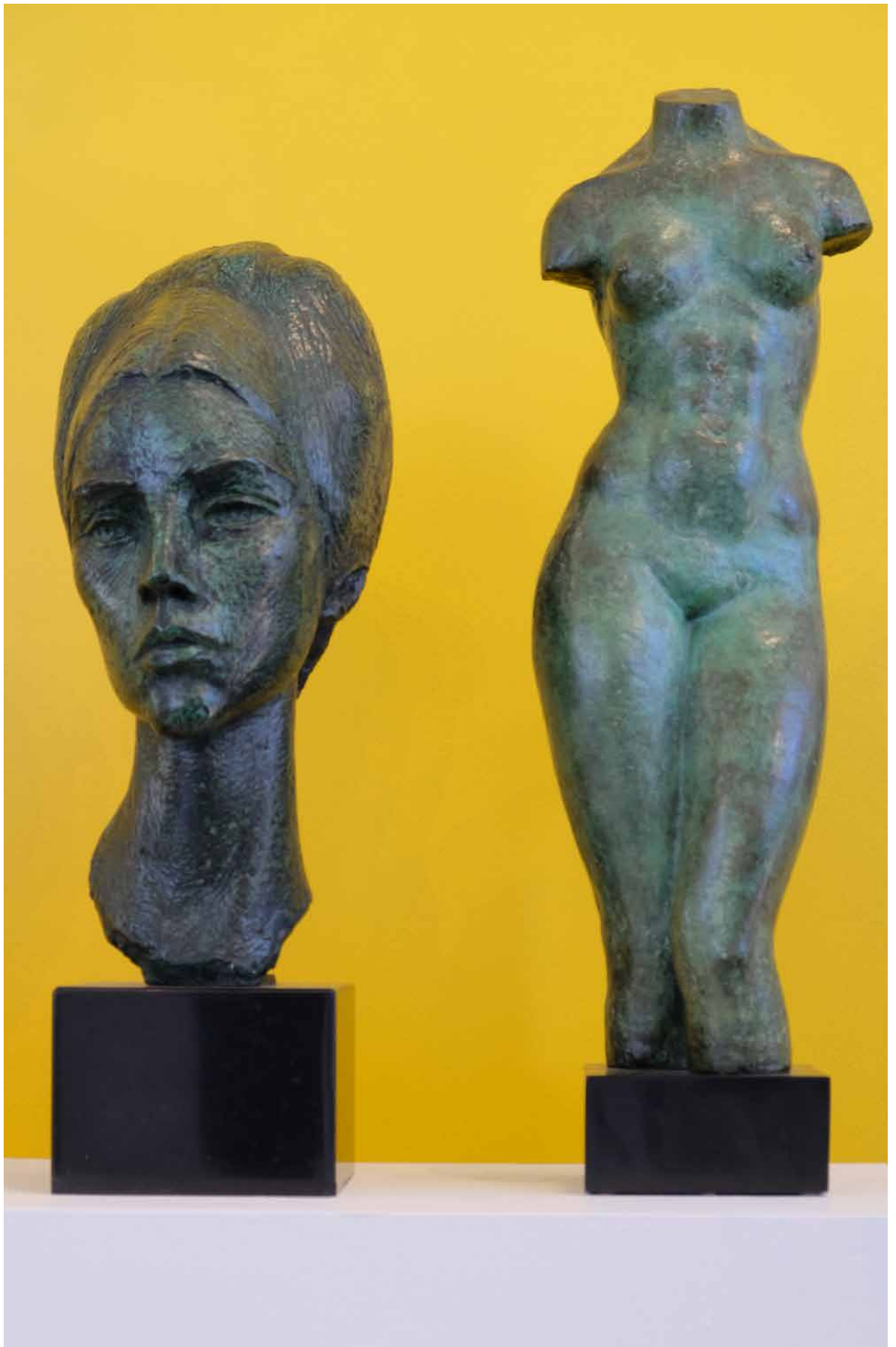
Pietà, c. 1950, stoneware
Gift of Beverly and George Palmer



Nude Torso, 1970s, bronze
Collection of Russell Martin



Prometheus, c. 1966, bronze
Collection of Patty and James Huffines



Head I (Carolynn), 1960, bronze
Collection of Michelle and Rex Poole

Torso, 1960, bronze
Collection of Beverly and George Palmer



Hippo Madre, 1983, bronze
Collection Jonathon Todd and Dale Huggins

sculptor also explored European modernist themes, as seen in the abstract *Mother and Child* (c. 1942, limestone), the columnar, carved *Jessica* (1942, maple), *Sisters* (1947, stoneware), or *St. Francis* (c. 1950, bronze). Umlauf's 1950s style tends toward balance, classicism, and allegory, as in the stoneware *Poetess* (1956) and the elegant bronze *Head I (Carolynn)* (1960). (This portrait is also known as Lynn, one the Umlaufs'

Poetess, c. 1956, terra cotta
Collection of Beverly and George Palmer





St. Sebastian, c. 1958, bronze
Collection Jonathon Todd and Dale Huggins



Jessica, 1942, maple
Collection Mary and Bill Mitchell

daughters and the twin sister of Madelon.) In the 1960s and 1970s, the artist grew increasingly interested in dance, sensuality, and the human form. Examples can be found throughout the gallery and the Garden.

We are honored and thankful for the collectors who graciously lent their works for this momentous exhibition. We're also indebted to our incredible volunteers and staff who will ensure that the UMLAUF will be here for the community for 30+ more years.

Woman in Prayer, 1949
terra cotta with rutile glaze on wood base
The John L. Nau III Collection of Texas Art





Amanti, 1977, bronze
Collection of Julie and Richard Schechter



Cat, c. 1965, bronze
Collection of Charles Peveto



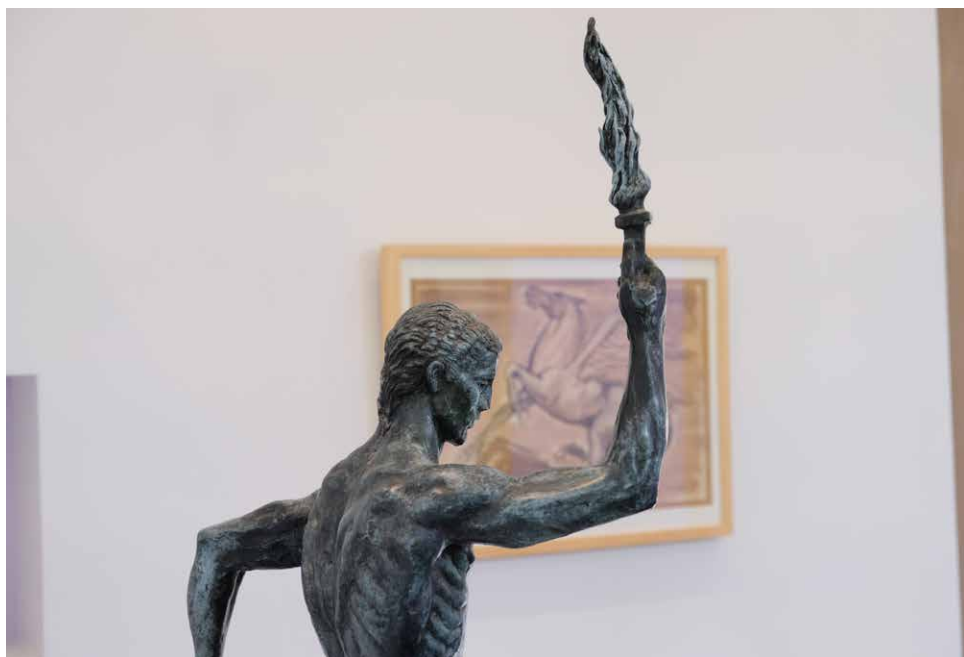
Prayer Figure, 1949, terra cotta and rutilated glaze
UMLAUF City of Austin Collection



Torso #2, 1966, Turkish rose onyx on Belgian black marble base. Collection of Connie and Allen Green



Birds on the Wing, c. 1965, bronze
Collection of Jonathon Todd and Dale Huggins



Monk, 1966, bronze
Collection of Contessa and Greg McPike



St. Francis, c. 1950, bronze
Collection of Stephen Fenoglio



Cat, 1958, bronze
Collection of Mary and Bill Finch



Mother and Child, 1960s, pencil on paper
Collection of Betsy Nelson



Female Head, 1950s, terra cotta
Collection of Jonathon Todd and Dale Huggins





Head, 1950, bronze with black patina
Collection of Greg Fawcett



Mother and Child, c. 1942, limestone
Collection of GERALYN and Mark Kever



Sisters, 1947, painted stoneware
Collection of Diane Land and Mayor Steve Adler



Young Colt, 1970s, bronze
Collection of Barbara Nau

About Charles Umlauf

Charles Julius Umlauf (1910-1994) was the sixth of eight children born to French and German immigrant parents on a farm outside South Haven, Michigan. When he was eight, the family moved to Chicago. His 4th grade teacher recognized his talent and helped him earn summer scholarships at the Art Institute of Chicago. Working under master sculptors Lorado Taft and Albin Polasek, Umlauf gained competence in a wide array of media. In 1937, Umlauf married fellow Art Institute student Angeline “Angie” Allen. The couple moved to Austin in 1941 when Umlauf became a Life Drawing and Sculpture professor at the University of Texas’s art department. He taught at UT for 40 years, retiring as Professor Emeritus in 1981.

Umlauf won numerous prestigious awards, including a Guggenheim Fellowship and a Ford Foundation Grant. He was honored in 1985 by the Houston Art League as Texas Artist of the Year and in 1993 by the City of San Antonio as “Alcalde.” Public collections and museums across the United States own his work, including the Smithsonian Institution in Washington, D.C. and the Metropolitan Museum of Art in New York. In Texas, there are more Umlauf sculptures in public locations than there are works by any other single sculptor.



Untitled (Head of a Woman), 1940s, painted terra cotta
Collection of GERALYN and Mark Kever



Bird Form (Abstraction), 1972, porphyry marble
Collection of Diane Land and Mayor Steve Adler



Opossum, 1960s, pencil and charcoal on paper
Collection of Greg Fawcett

Seated Figure, 1965
golden electroplated bronze
UMLAUF City of Austin Collection



Colt, 1970s, bronze
Collection of Barbara Nau



Eagle, 1958, bronze
Collection of Jonathon Todd and Dale Huggins

1991-2021



Man in Supplication, 1971
bronze
Collection of
Charles Peveto

Female Torso, 1987
bronze
Collection of
Kimberly Kohlhaas

The Kiss, c. 1975
bronze
Collection of
Patty and James Huffines

Madonna and Child, 1968
bronze
Collection of
Charles Peveto

Intimate Home & Studio Tour

Thursday, July 1st – 6-8pm

Guided Tour of Charles Umlauf's Sculptures on the UT Campus

Saturday, July 10th – 10am-1pm

Collectors' Show & Tell Insights & Closing Reception

Thursday, September 9th – 5-9pm

Family Day + Special Activities

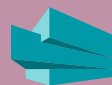
Sunday, September 12th – 12-4pm

All photographs by Tim Graves



605 Azie Morton Road, Austin, TX 78704
Tues-Fri 10-4; Sat & Sun 11-4
umlaufsculpture.org

Cover Sculpture:
Uccello II (Dove), 1972
bronze on marble base
Collection of Mary and Bill Mitchell



Cultural Arts
CITY OF AUSTIN
ECONOMIC
DEVELOPMENT

This project is supported in part by the
Cultural Arts Division of the City of Austin
Economic Development Department.



OUR MISSION

The UMLAUF Sculpture Garden + Museum exhibits the work of Charles Umlauf and other visual and performing artists in a museum and garden setting. The UMLAUF provides educational and cultural experiences that encourage the understanding and appreciation of the intersection of nature, sculpture, and the arts.

2021 BOARD OF DIRECTORS

James Russell - *President*

Jennie Branch - *Vice President*

Mark Williams - *Treasurer*

Elizabeth Hamilton - *Governance*

Julie Schechter - *Secretary*

Kathy Smith - *Chair*

Greg Cavit

John Chen

Aan Coleman

Pearl Downton

Laura Esparza, *Ex Officio*

Nhat Ho

Joe Langford

Nikelle Meade

Steve Miller

Doug Roberts

Richard Weiss

STAFF

Katie Robinson Edwards, Ph.D. - *Executive Director & Curator*

Armando Garcia - *Director of Operations & Administration*

Amanda Valbracht - *Venue & Events Manager*

Jessica Burford - *Senior Development Manager*

Annalisa Giannotti - *Community Engagement & Programs Manager*

Graeme Durant - *Curatorial Assistant*

Megan Henderson - *Museum Coordinator*

Celest Austin - *Development Assistant*

Frances Thompson - *Docent Coordinator*



LENDERS TO THE EXHIBITION

Diane Land and Mayor Steve Adler
Greg Fawcett
Stephen Fenoglio
Mary and William Finch
Anne Giles
Connie and Allen Green
Patty and James Huffines
Jonathon Todd and Dale Huggins
Geraldyn and Mark Kever
Kimberly Kohlhaas
Russell Martin
Greg McPike
Mary and Bill Mitchell
The John L. Nau III Collection of Texas Art
Barbara Nau
Betsy Nelson
Beverly and George Palmer
Charles Peveto
Michelle and Rex Poole
Julie and Richard Schechter
Christie Wise
Scott Wise
Linda and Gus Voelzel
City of Austin Collection
UMLAUF Sculpture Garden + Museum Collection

This exhibition was made possible through the generous support of Mo and Richard Anderson, Russell Martin, Frances and Robin Thompson, George and Beverly Palmer, and the City of Austin Economic Development Cultural Arts funding. Thank you Tim Graves and Steve Bosak.



Fish Form (Abstraction), c. 1972
bronze on limestone base
Collection of Linda and Gus Voelzel



Hippo Bambino, 1983, bronze
Collection of Mary and Bill Finch